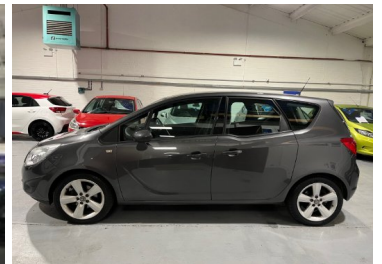


2010(10) Vauxhall Meriva 1.4i 16V Exclusiv 5dr

SOLD



Engine: Petrol
Body: MPV
Gearbox: Manual
Capacity: 1364cc
Colour: Grey
Mileage: 77,000
CO²: 144g/km
MPG: 46.3mpg
Top Speed: 110mph
BHP: 99bhp
Insurance Grp: 9E

Actons Motor Company
 Galen House
 Artex Avenue
 Rustington
 West Sussex, BN16 3LN

16" STEEL	"LEAD ME TO THE CAR" LIGHTS
'LIGHTS ON' REMINDER	CRUISE CONTROL
WARNING BUZZER	ELECTRIC POWER STEERING
INFORMATION DISPLAY	SERVICE INTERVAL INDICATOR
AUXILIARY INPUT SOCKET	STEERING WHEEL MOUNTED
	AUDIO CONTROLS
USB CONNECTION	BODY COLOUR BUMPERS
BODY COLOUR DOOR HANDLES	BODY COLOUR MIRROR
	HOUSING
BODY COLOUR TAILGATE	CHROME GRILLE
HANDLE	DAYTIME RUNNING LIGHTS
DOOR TO DOOR ILLUMINATION	ELECTRIC FRONT WINDOWS
ELECTRICALLY ADJUSTABLE	ELECTROCHROME ANTI DAZZLE
AND HEATED DOOR MIRRORS	REAR VIEW MIRROR
FLEXDOORS	GREEN TINTED GLASS
PARKING LIGHTS	REAR WINDOW DEFROSTER
REAR WIPE AUTO WHEN IN	12V POWER POINT FOR REAR
REVERSE + FRONT WIPE ON	PASSENGERS
12V POWER POINT FRONT	2 HEIGHT ADJUSTABLE REAR
	HEADRESTS
AMBIENT LIGHTING	BOOT LIGHT
CENTRE CONSOLE WITH	COURTESY LIGHTS
CUPHOLDERS	DRIVER SEAT HEIGHT ADJUST
DRIVER SUNGLASSES HOLDER	DRIVER/PASSENGER
	SUNVISORS AND VANITY